

Sharing the Seas: Safe Boating for Sailors and Whales

See a Spout, Watch Out!



© Dolphin Fleet

www.seeaspout.org/sail

S

Safe boating practices:

Maintain a safe distance for their safety and yours
100ft. approach limit for all marine mammal species
By US law, you must stay 1,500ft. away from N. Atlantic right whales
Reduce your speed and post a lookout

A

Alert authorities to important sightings:

For right whale sightings and/or dead, entangled, ship struck
or injured marine mammals and sea turtles, call **1-866-755-NOAA**
or call **US Coast Guard on Ch.16**.

I

Important information:

Understanding protected species and their behavior is important for
your safety. Learn more at www.seeaspout.org/sail

L

Limit litter:

Marine debris kills thousands of marine animals each year
and enters the human food chain. It also causes millions
of dollars of damage to vessels and coastal economies through
warped propellers, fouled engines, and decreased tourism.
Prevention is vital: do not let your trash go overboard.



**Sailors can help to save protected species
through safe boating and sightings reports.**

FOUR COMMONLY SEEN SPECIES IN THE NORTHEAST



*For more species information,
visit seaspout.org/sail*



Audubon Society
of Rhode Island



NEW BEDFORD
WHALING
MUSEUM



N. Atlantic right whale

- 45-55ft. in length
- Produce a V-shaped blow
- No dorsal fin
- Distribution from Canada to Florida
- Critically endangered species



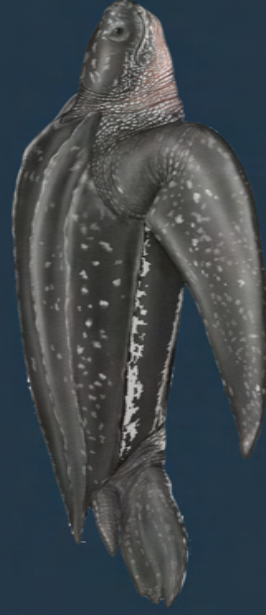
Humpback whale

- 45-55ft. in length
- Long, white flippers
- Notable hump before dorsal fin
- Distribution from Canada to the Caribbean



Common dolphin

- 6-9ft in length
- Hourglass coloration
- Travel in pods
- Distribution from Canada to North Carolina
- Protected species



Leatherback sea turtle

- 6.5 ft in length
- Forage in coastal waters
- Distribution from Maine to the Caribbean
- Endangered species